



# Unismart 3 DBBASE V2.28 升级说明

日期：2021 年 8 月

## 1. Unismart 3 设备

项目	变更前	变更后
APP	V39.0	V39.0
DBBASE	V2.17	V2.28
H18	V1.6	V1.8

## 2. Uni-3 新增读写头 (无)

## 3. 升级说明

① 升级 H18 读写头，优化 Ricoh 3502 系列 OEM 复位功能。

## 4. Uni-3 空芯片变更明细 (无)

## 5. Uni-3 新增芯片型号 (无)

## 6. Uni-3 升级芯片型号

品牌	板号	型号显示	测试头	容量	颜色	区域	适用打印机型号
RICOH	PCB-B44	MP-C2503/841932	H18	15K	BK	AU	Ricoh MP C2003/MP C2503/ MP C2004/MP C2504
RICOH	PCB-B44	MP-C2503H/841935	H18	9.5K	C		
RICOH	PCB-B44	MP-C2503H/841934	H18	9.5K	M		
RICOH	PCB-B44	MP-C2503H/841933	H18	9.5K	Y		
RICOH	PCB-B44	MP-C2503/841925	H18	15K	BK	EUR	
RICOH	PCB-B44	MP-C2503H/841928	H18	9.5K	C		
RICOH	PCB-B44	MP-C2503H/841927	H18	9.5K	M		
RICOH	PCB-B44	MP-C2503H/841926	H18	9.5K	Y		
RICOH	PCB-B44	MP-C2503/841929	H18	5.5K/3K	Y		
RICOH	PCB-B44	MP-C2503/841930	H18	5.5K/3K	M		
RICOH	PCB-B44	MP-C2503/841931	H18	5.5K/3K	C	NA	
RICOH	PCB-B44	MP-C2503/841918	H18	15K	BK		
RICOH	PCB-B44	MP-C2503H/841921	H18	9.5K	C		
RICOH	PCB-B44	MP-C2503H/841920	H18	9.5K	M		
RICOH	PCB-B44	MP-C2503H/841919	H18	9.5K	Y		
RICOH	PCB-B44	MP-C2503/841924	H18	5.5K	C		



RICOH	PCB-B44	MP-C2503/841923	H18	5.5K	M		
RICOH	PCB-B44	MP-C2503/841922	H18	5.5K	Y		
RICOH	PCB-B44	MP-C2503/841946	H18	15K	BK	CHN	Ricoh MP C2004ex/C2004/ C2504/C2504ex/C2503
RICOH	PCB-B44	MP-C2503/841947	H18	9.5K	Y		
RICOH	PCB-B44	MP-C2503/841948	H18	9.5K	M		
RICOH	PCB-B44	MP-C2503/841949	H18	9.5K	C		
RICOH	PCB-B44	MP-C2503/600281	H18	10K	BK		
RICOH	PCB-B44	MP-C2503/600284	H18	3K	C		
RICOH	PCB-B44	MP-C2503/600283	H18	3K	M	JP	Ricoh MP C2004ex/C2004/C2504/ C2504ex/C2503/IM C2500
RICOH	PCB-B44	MP-C2503/600282	H18	3K	Y		
RICOH	PCB-B44	MP-C3503/841829	H18	29.5K	BK		
RICOH	PCB-B44	MP-C3503/841832	H18	18K	C	AU	Ricoh MP C3003/MP C3503/ MP C3004/MP C3504
RICOH	PCB-B44	MP-C3503/841831	H18	18K	M		
RICOH	PCB-B44	MP-C3503/841830	H18	18K	Y		
RICOH	PCB-B44	MP-C3503/841841	H18	29.5K	BK	CHN	
RICOH	PCB-B44	MP-C3503/841844	H18	18K	C		
RICOH	PCB-B44	MP-C3503/841843	H18	18K	M		
RICOH	PCB-B44	MP-C3503/841842	H18	18K	Y	EUR	
RICOH	PCB-B44	MP-C3503/841817	H18	29.5K	BK		
RICOH	PCB-B44	MP-C3503/841820	H18	18K	C		
RICOH	PCB-B44	MP-C3503/841819	H18	18K	M	JP	
RICOH	PCB-B44	MP-C3503/841818	H18	18K	Y		
RICOH	PCB-B44	MP-C3503/600249	H18	29.5K	BK		
RICOH	PCB-B44	MP-C3503/600252	H18	18K	C	NA	
RICOH	PCB-B44	MP-C3503/600251	H18	18K	M		
RICOH	PCB-B44	MP-C3503/600250	H18	18K	Y		
RICOH	PCB-B44	MP-C3503/841813	H18	29.5K	BK	AU	
RICOH	PCB-B44	MP-C3503/841816	H18	18K	C		
RICOH	PCB-B44	MP-C3503/841815	H18	18K	M		
RICOH	PCB-B44	MP-C3503/841814	H18	18K	Y	CHN	
RICOH	PCB-B44	MP-C6003/841865	H18	33K	BK		
RICOH	PCB-B44	MP-C6003/841868	H18	22.5K	C		
RICOH	PCB-B44	MP-C6003/841867	H18	22.5K	M	EUR	
RICOH	PCB-B44	MP-C6003/841866	H18	22.5K	Y		
RICOH	PCB-B44	MP-C6003/841877	H18	33K	BK		
RICOH	PCB-B44	MP-C6003/841880	H18	22.5K	C	CHN	
RICOH	PCB-B44	MP-C6003/841879	H18	22.5K	M		
RICOH	PCB-B44	MP-C6003/841878	H18	22.5K	Y		
RICOH	PCB-B44	MP-C6003/841853	H18	33K	BK	EUR	
RICOH	PCB-B44	MP-C6003/841856	H18	22.5K	C		
RICOH	PCB-B44	MP-C6003/841855	H18	22.5K	M		



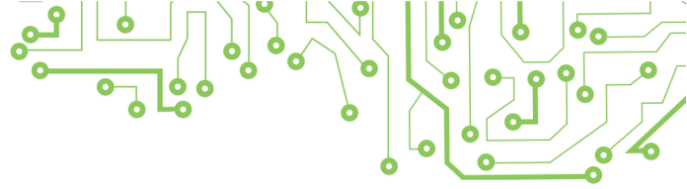
RICOH	PCB-B44	MP-C6003/841854	H18	22.5K	Y	NA	Ricoh MP C306/MP C406/ MP C307/MP C407
RICOH	PCB-B44	MP-C6003/841849	H18	33K	BK		
RICOH	PCB-B44	MP-C6003/841852	H18	22.5K	C		
RICOH	PCB-B44	MP-C6003/841851	H18	22.5K	M		
RICOH	PCB-B44	MP-C6003/841850	H18	22.5K	Y		
RICOH	PCB-B44	MP-C6003/600244	H18	33K	BK	JP	
RICOH	PCB-B44	MP-C6003/600245	H18	22.5K	C		
RICOH	PCB-B44	MP-C6003/600246	H18	22.5K	M		
RICOH	PCB-B44	MP-C6003/600247	H18	22.5K	Y		
RICOH	PCB-B44	MP-C406/842111	H18	17K	BK	CHN	
RICOH	PCB-B44	MP-C406/842112	H18	6K	C		
RICOH	PCB-B44	MP-C406/842113	H18	6K	M		
RICOH	PCB-B44	MP-C406/842114	H18	6K	Y		
RICOH	PCB-B44	MP-C406/842095	H18	17K	BK	EUR	
RICOH	PCB-B44	MP-C406/842096	H18	6K	C		
RICOH	PCB-B44	MP-C406/842097	H18	6K	M		
RICOH	PCB-B44	MP-C406/842098	H18	6K	Y		
RICOH	PCB-B44	MP-C406/842091	H18	17K	BK	NA	
RICOH	PCB-B44	MP-C406/842092	H18	6K	C		
RICOH	PCB-B44	MP-C406/842093	H18	6K	M		
RICOH	PCB-B44	MP-C406/842094	H18	6K	Y		
RICOH	PCB-B44	MP-C406/600342	H18	17K	BK	JP	
RICOH	PCB-B44	MP-C406/600343	H18	6K	C		
RICOH	PCB-B44	MP-C406/600344	H18	6K	M		
RICOH	PCB-B44	MP-C406/600345	H18	6K	Y		
RICOH	PCB-B44	MP-C407/842207	H18	17.5K	BK	WW	Ricoh MP C407SPF
RICOH	PCB-B44	MP-C407/842208	H18	8K	C		
RICOH	PCB-B44	MP-C407/842209	H18	8K	M		
RICOH	PCB-B44	MP-C407/842210	H18	8K	Y		
RICOH	PCB-B44	SP-C840H/600637	H18	25K	BK	JP	Ricoh SP C841/C841M/ C840/C840M
RICOH	PCB-B44	SP-C840H/600634	H18	20K	C		
RICOH	PCB-B44	SP-C840H/600635	H18	20K	M		
RICOH	PCB-B44	SP-C840H/600636	H18	20K	Y		
RICOH	PCB-B44	SP-C840/600633	H18	12K	BK		
RICOH	PCB-B44	SP-C840/600630	H18	12K	C		
RICOH	PCB-B44	SP-C840/600631	H18	12K	M		
RICOH	PCB-B44	SP-C840/600632	H18	12K	Y		
RICOH	PCB-B44	SP-C840A/821255	H18	43K	BK	WW( ex.J P)	Ricoh SP C840DN/SP C842DN
RICOH	PCB-B44	SP-C840A/821258	H18	34K	C		
RICOH	PCB-B44	SP-C840A/821257	H18	34K	M		
RICOH	PCB-B44	SP-C840A/821256	H18	34K	Y		



RICOH	PCB-B44	SP-C830H/821181	H18	23.5K	BK	WW( ex.J P)	Ricoh IPSiO SP C831/ 831M/C830/830M
RICOH	PCB-B44	SP-C830H/821184	H18	27K	C		
RICOH	PCB-B44	SP-C830H/821183	H18	27K	M		
RICOH	PCB-B44	SP-C830H/821182	H18	27K	Y		
RICOH	PCB-B44	SP-C830H/600514	H18	25K	BK	JP	
RICOH	PCB-B44	SP-C830H/600517	H18	20K	C		
RICOH	PCB-B44	SP-C830H/600516	H18	20K	M		
RICOH	PCB-B44	SP-C830H/600515	H18	20K	Y		
RICOH	PCB-B44	SP-C830/600518	H18	12K	BK		
RICOH	PCB-B44	SP-C830/600521	H18	12K	C		
RICOH	PCB-B44	SP-C830/600520	H18	12K	M		
RICOH	PCB-B44	SP-C830/600519	H18	12K	Y		
RICOH	PCB-B44	SP-C830/821149	H18	12K	BK	WW( ex.J P)	
RICOH	PCB-B44	SP-C830/821152	H18	12K	C		
RICOH	PCB-B44	SP-C830/821151	H18	12K	M		
RICOH	PCB-B44	SP-C830/821150	H18	12K	Y		
RICOH	PCB-B44	MP-C305H/841633	H18	12K	BK	CHN	Ricoh Aficio MP C305spf
RICOH	PCB-B44	MP-C305H/841625	H18	4K	C		
RICOH	PCB-B44	MP-C305H/841626	H18	4K	M		
RICOH	PCB-B44	MP-C305H/841627	H18	4K	Y		
RICOH	PCB-B44	MP-C305H/842079	H18	12K	BK	EUR	
RICOH	PCB-B44	MP-C305H/842082	H18	4K	C		
RICOH	PCB-B44	MP-C305H/842081	H18	4K	M		
RICOH	PCB-B44	MP-C305H/841597	H18	4K	Y		
RICOH	PCB-B44	MP-C305H/842119	H18	12K	BK	NA	
RICOH	PCB-B44	MP-C305H/841122	H18	4K	C		
RICOH	PCB-B44	MP-C305H/841121	H18	4K	M		
RICOH	PCB-B44	MP-C305H/841120	H18	4K	Y		
RICOH	PCB-B44	MP-C305H/600273	H18	12K	BK	JP	
RICOH	PCB-B44	MP-C305H/600274	H18	4K	C		
RICOH	PCB-B44	MP-C305H/600275	H18	4K	M		
RICOH	PCB-B44	MP-C305H/600276	H18	4K	Y		
RICOH	PCB-B44	MP-C305H/842079	H18	12K	BK	---	
RICOH	PCB-B44	MP-C305H/842082	H18	4K	C		
RICOH	PCB-B44	MP-C305H/842081	H18	4K	M		
RICOH	PCB-B44	MP-C305H/842080	H18	4K	Y		
RICOH	PCB-B44	MP-C3502/841675	H18	28K	BK	CHN	Ricoh MPC3002/MPC3502
RICOH	PCB-B44	MP-C3502/841678	H18	18K	C		
RICOH	PCB-B44	MP-C3502/841677	H18	18K	M		
RICOH	PCB-B44	MP-C3502/841676	H18	18K	Y		
RICOH	PCB-B44	MP-C3502/841735	H18	28K	BK		



RICOH	PCB-B44	MP-C3502/841738	H18	18K	C		
RICOH	PCB-B44	MP-C3502/841737	H18	18K	M		
RICOH	PCB-B44	MP-C3502/841736	H18	18K	Y		
RICOH	PCB-B44	MP-C5502/841707	H18	31K	BK	CHN	
RICOH	PCB-B44	MP-C5502/841710	H18	22.5K	C		
RICOH	PCB-B44	MP-C5502/841709	H18	22.5K	M		
RICOH	PCB-B44	MP-C5502/841708	H18	22.5K	Y	EUR	
RICOH	PCB-B44	MP-C5502/842020	H18	31K	BK		
RICOH	PCB-B44	MP-C5502/842023	H18	22.5K	C		
RICOH	PCB-B44	MP-C5502/842022	H18	22.5K	M		
RICOH	PCB-B44	MP-C5502/842021	H18	22.5K	Y	NA	
RICOH	PCB-B44	MP-C5502/841751	H18	31K	BK		
RICOH	PCB-B44	MP-C5502/841754	H18	22.5K	C		
RICOH	PCB-B44	MP-C5502/841753	H18	22.5K	M		
RICOH	PCB-B44	MP-C5502/841752	H18	22.5K	Y	EUR	
RICOH	PCB-B44	MP-C3502/841651	H18	28K	BK		
RICOH	PCB-B44	MP-C3502/841652	H18	18K	Y		
RICOH	PCB-B44	MP-C3502/841653	H18	18K	M		
RICOH	PCB-B44	MP-C3502/841654	H18	18K	C	AU	
RICOH	PCB-B44	MP-C3502/841663	H18	28K	BK		
RICOH	PCB-B44	MP-C3502/841664	H18	18K	Y		
RICOH	PCB-B44	MP-C3502/841665	H18	18K	M		
RICOH	PCB-B44	MP-C3502/841666	H18	18K	C	JP	Ricoh MP C1803
RICOH	PCB-B44	MP-C1803/600286	H18	3K	BK		
RICOH	PCB-B44	MP-C1803/600287	H18	1.4K	C		
RICOH	PCB-B44	MP-C1803/600288	H18	1.4K	M		
RICOH	PCB-B44	MP-C1803/600289	H18	1.4K	Y	NA	
RICOH	PCB-B44	MP-C8003/842196	H18	47K	BK		
RICOH	PCB-B44	MP-C8003/842199	H18	26K	C		
RICOH	PCB-B44	MP-C8003/842198	H18	26K	M		
RICOH	PCB-B44	MP-C8003/842197	H18	26K	Y	JP	Ricoh MP C8003/C6503
RICOH	PCB-B44	MP-C8003/600375	H18	47K	BK		
RICOH	PCB-B44	MP-C8003/600377	H18	26K	C		
RICOH	PCB-B44	MP-C8003/600378	H18	26K	M		
RICOH	PCB-B44	MP-C8003/600376	H18	26K	Y	EUR	
RICOH	PCB-B44	MP-C8003/842192	H18	47K	BK		
RICOH	PCB-B44	MP-C8003/842193	H18	26K	Y		
RICOH	PCB-B44	MP-C8003/842194	H18	26K	M		
RICOH	PCB-B44	MP-C8003/842195	H18	26K	C	NA	Ricoh Pro C5200S/Pro C5210S
RICOH	PCB-B44	C5200/828422	H18	33K	BK		
RICOH	PCB-B44	C5200/828425	H18	24K	C		



RICOH	PCB-B44	C5200/828424	H18	24K	M	JP		
RICOH	PCB-B44	C5200/828423	H18	24K	Y			
RICOH	PCB-B44	C5200/600379	H18	33K	BK			
RICOH	PCB-B44	C5200/600382	H18	24K	C			
RICOH	PCB-B44	C5200/600381	H18	24K	M			
RICOH	PCB-B44	C5200/600380	H18	24K	Y			
RICOH	PCB-B44	MP-C400/841724	H18	10K	BK	NA	Ricoh MP C401/C401SR	
RICOH	PCB-B44	MP-C400/841725	H18	10K	C			
RICOH	PCB-B44	MP-C400/841726	H18	10K	M			
RICOH	PCB-B44	MP-C400/841727	H18	10K	Y			
RICOH	PCB-B44	MP-C400/842038	H18	10K	BK	EUR		
RICOH	PCB-B44	MP-C400/842039	H18	10K	C			
RICOH	PCB-B44	MP-C400/842040	H18	10K	M			
RICOH	PCB-B44	MP-C400/842041	H18	10K	Y			
RICOH	PCB-B44	MP-C2503/841950	H18	3K	Y	CHN		Ricoh IM C2000/2500
RICOH	PCB-B44	MP-C2503/841951	H18	3K	M			
RICOH	PCB-B44	MP-C2503/841952	H18	3K	C			
RICOH	PCB-B44	IM-C2500K/842307	H18	16.5K	BK	NA		
RICOH	PCB-B44	IM-C2500Y/842308	H18	10.5K	Y			
RICOH	PCB-B44	IM-C2500M/842309	H18	10.5K	M			
RICOH	PCB-B44	IM-C2500C/842310	H18	10.5K	C			
RICOH	PCB-B44	IM-C2500K/842311	H18	16.5K	BK	EUR		
RICOH	PCB-B44	IM-C2500Y/842312	H18	10.5K	Y			
RICOH	PCB-B44	IM-C2500M/842313	H18	10.5K	M			
RICOH	PCB-B44	IM-C2500C/842314	H18	10.5K	C			
RICOH	PCB-B44	IM-C2500K/842327	H18	16.5K	BK	CHN		
RICOH	PCB-B44	IM-C2500Y/842328	H18	10.5K	Y			
RICOH	PCB-B44	IM-C2500M/842329	H18	10.5K	M			
RICOH	PCB-B44	IM-C2500C/842330	H18	10.5K	C			
RICOH	PCB-B44	IM-C6000Y/600241	H18	15K	Y	JP	Ricoh IM C6000/C5500/C4500	
RICOH	PCB-B44	IM-C6000M/600242	H18	15K	M			
RICOH	PCB-B44	IM-C6000C/600243	H18	15K	C			
RICOH	PCB-B44	IM-C2000K/600436	H18	3K	BK	JP	Ricoh IM C2000/2000F	
RICOH	PCB-B44	IM-C2000Y/600437	H18	1.4K	Y			
RICOH	PCB-B44	IM-C2000M/600438	H18	1.4K	M			
RICOH	PCB-B44	IM-C2000C/600439	H18	1.4K	C	NA	Ricoh MP C501SP	
RICOH	PCB-B44	MP-C501K/842243	H18	14K	BK			
RICOH	PCB-B44	MP-C501C/842244	H18	12K	C			
RICOH	PCB-B44	MP-C501M/842245	H18	12K	M			
RICOH	PCB-B44	MP-C501Y/842246	H18	12K	Y			
RICOH	PCB-B44	MP-C501K/842247	H18	14K	BK	EUR		



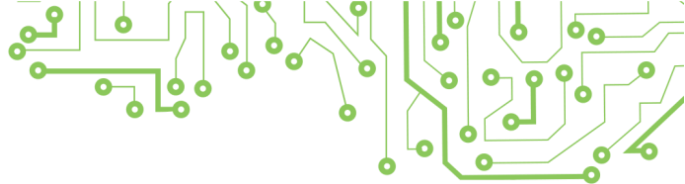


RICOH	PCB-B44	MP-C501C/842248	H18	12K	C			
RICOH	PCB-B44	MP-C501M/842249	H18	12K	M			
RICOH	PCB-B44	MP-C501Y/842250	H18	12K	Y			
RICOH	PCB-B44	IM-C3500K/842251	H18	31K	BK	NA	Ricoh IM C3000/IM C3500	
RICOH	PCB-B44	IM-C3500Y/842252	H18	19K	Y			
RICOH	PCB-B44	IM-C3500M/842253	H18	19K	M			
RICOH	PCB-B44	IM-C3500C/842254	H18	19K	C			
RICOH	PCB-B44	IM-C3500K/842255	H18	31K	BK	EUR		
RICOH	PCB-B44	IM-C3500Y/842256	H18	19K	Y			
RICOH	PCB-B44	IM-C3500M/842257	H18	19K	M			
RICOH	PCB-B44	IM-C3500C/842258	H18	19K	C			
RICOH	PCB-B44	IM-C3000K/842271	H18	31K	BK	CHN		Ricoh IM C3000/3000
RICOH	PCB-B44	IM-C3000Y/842272	H18	19K	Y			
RICOH	PCB-B44	IM-C3000M/842273	H18	19K	M			
RICOH	PCB-B44	IM-C3000C/842274	H18	19K	C			
RICOH	PCB-B44	IM-C6000K/842279	H18	33K	BK	NA	Ricoh IM C4500/C6000	
RICOH	PCB-B44	IM-C6000Y/842280	H18	22.5K	Y			
RICOH	PCB-B44	IM-C6000M/842281	H18	22.5K	M			
RICOH	PCB-B44	IM-C6000C/842282	H18	22.5K	C			
RICOH	PCB-B44	IM-C6000K/842283	H18	33K	BK	EUR		
RICOH	PCB-B44	IM-C6000Y/842284	H18	22.5K	Y			
RICOH	PCB-B44	IM-C6000M/842285	H18	22.5K	M			
RICOH	PCB-B44	IM-C6000C/842286	H18	22.5K	C			
RICOH	PCB-B44	IM-C6000K/842299	H18	33K	BK	CHN		
RICOH	PCB-B44	IM-C6000Y/842300	H18	22.5K	Y			
RICOH	PCB-B44	IM-C6000M/842301	H18	22.5K	M			
RICOH	PCB-B44	IM-C6000C/842302	H18	22.5K	C			
RICOH	PCB-B44	C5100Y/600231	H18	30K	Y	JP	Ricoh Pro C5100S/C5110s	
RICOH	PCB-B44	C5100M/600232	H18	30K	M			
RICOH	PCB-B44	C5100C/600233	H18	30K	C			
RICOH	PCB-B44	C5100K/600234	H18	30K	BK			
RICOH	PCB-B44	C5100K/828221	H18	30K	BK	EUR		
RICOH	PCB-B44	C5100Y/828222	H18	30K	Y			
RICOH	PCB-B44	C5100M/828223	H18	30K	M			
RICOH	PCB-B44	C5100C/828224	H18	30K	C			
RICOH	PCB-B44	C5100K/828350	H18	30K	BK	NA		
RICOH	PCB-B44	C5100Y/828351	H18	30K	Y			
RICOH	PCB-B44	C5100M/828352	H18	30K	M			
RICOH	PCB-B44	C5100C/828353	H18	30K	C			
RICOH	PCB-B44	SP-C430AY/821075	H18	24K	Y	EUR	Ricoh SP C440DN	
RICOH	PCB-B44	SP-C430AM/821076	H18	24K	M			



RICOH	PCB-B44	SP-C430AC/821077	H18	24K	C	NA		
RICOH	PCB-B44	SP-C430AK/821094	H18	21K	BK			
RICOH	PCB-B44	SP-C430AK/821105	H18	21K	BK			
RICOH	PCB-B44	SP-C430AY/821106	H18	24K	Y			
RICOH	PCB-B44	SP-C430AM/821107	H18	24K	M			
RICOH	PCB-B44	SP-C430AC/821108	H18	24K	C			
RICOH	PCB-B44	SP-C830HK/821137	H18	23.5K	BK	AU	Ricoh SP C830/831	
RICOH	PCB-B44	SP-C830HY/821138	H18	27K	Y			
RICOH	PCB-B44	SP-C830HM/821139	H18	27K	M			
RICOH	PCB-B44	SP-C830HC/821140	H18	27K	C			
RICOH	PCB-B44	SP-C830HK/821185	H18	23.5K	BK	EUR		
RICOH	PCB-B44	SP-C830HY/821186	H18	16K	Y			
RICOH	PCB-B44	SP-C830HM/821187	H18	16K	M			
RICOH	PCB-B44	SP-C830HC/821188	H18	16K	C			
RICOH	PCB-B44	SP-C840HK/821259	H18	30K	BK	EUR		Ricoh SP C840/842
RICOH	PCB-B44	SP-C840HY/821260	H18	22.5K	Y			
RICOH	PCB-B44	SP-C840HM/821261	H18	22.5K	M			
RICOH	PCB-B44	SP-C840HC/821262	H18	22.5K	C			
RICOH	PCB-B44	MP-C5502/841695	H18	31K	BK	AU	Ricoh MP C4502/5502	
RICOH	PCB-B44	MP-C5502/841696	H18	22.5K	Y			
RICOH	PCB-B44	MP-C5502/841697	H18	22.5K	M			
RICOH	PCB-B44	MP-C5502/841698	H18	22.5K	C			
RICOH	PCB-B44	MP-C8002/841784	H18	48.5K	BK	EUR	Ricoh MP C8002/6502	
RICOH	PCB-B44	MP-C8002/841785	H18	29K	Y			
RICOH	PCB-B44	MP-C8002/841786	H18	29K	M			
RICOH	PCB-B44	MP-C8002/841787	H18	29K	C	NA		
RICOH	PCB-B44	MP-C8002/842083	H18	48.5K	BK			
RICOH	PCB-B44	MP-C8002/842084	H18	29K	Y			
RICOH	PCB-B44	MP-C8002/842085	H18	29K	M			
RICOH	PCB-B44	MP-C8002/842086	H18	29K	C			
RICOH	PCB-B44	Ricoh-3502	H18	---	---	---		Ricoh Aficio MP C305spf/C306/ C406/C307/C407spfF/C1803/ C2003/C2503/C2004/C2504/C3002 /C3003/C3502/C3503/C3004/C350 4/C4502/C4503/C4504/C5502/C55 03/C5504/C6003/C6004/C6502sp/ C6503/C8002sp/C8003/SP C830/ 830M/C831/831M/C841/a1/C841M /a1/C840/a1/C840M/a1/C840DN/ C842DN/Pro C5100S/C5110S/ C5200S/C5210S





### 7. 升级后版本确认步骤

客户升级设备后进入“设置-版本”界面，通过以下步骤确认升级后程序是否为最新版本

(可参照第一点“Unismart 3 设备”附表)



图 1



图 2



图 3 无测试头连接时的版本



图 4 连接测试头时的版本

#### 设备&测试头版本明细清单 (点击 DBBASE 进入查看)



图 5

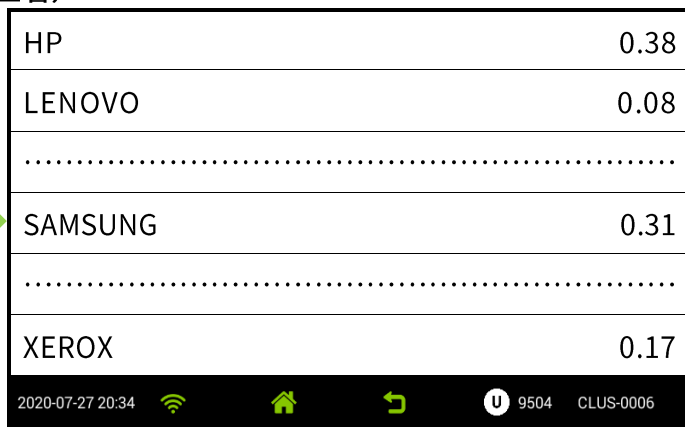


图 6



www.apexmic.com

info@apexmic.com



SN-XEROX-7100	0.04
TALLY	0.03
TOSHIBA	0.03
UTAX	0.03
VersionInfo	2.28
XEROX	0.17



Hardware #1	11.13
.....	
H18	1.8
H24	3.6
H25	1.5
ST2	4.5

图 7

图 8

珠海艾派克微电子有限公司保留产品设计与规格的变更权利，届时恕不另行通知；资料内产品与实物有轻微差别，请以实物为准；所有资料经过仔细校对，如有任何印刷错漏本公司不承担因此产生之后果；本公司保留以上宣传数据解释权。所有出现的其他产品或品牌名称是其各自所有者的商标或注册商标。